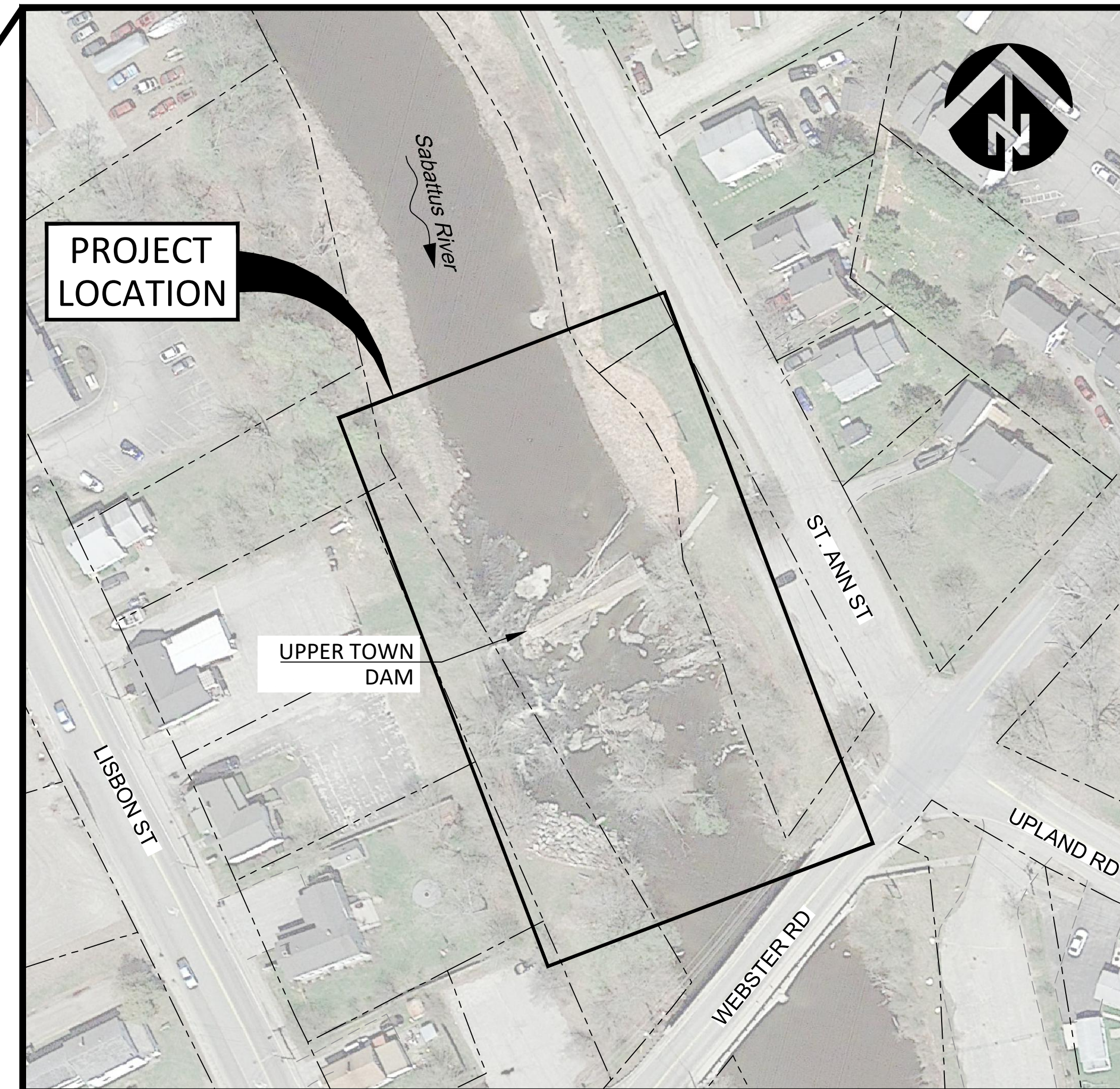
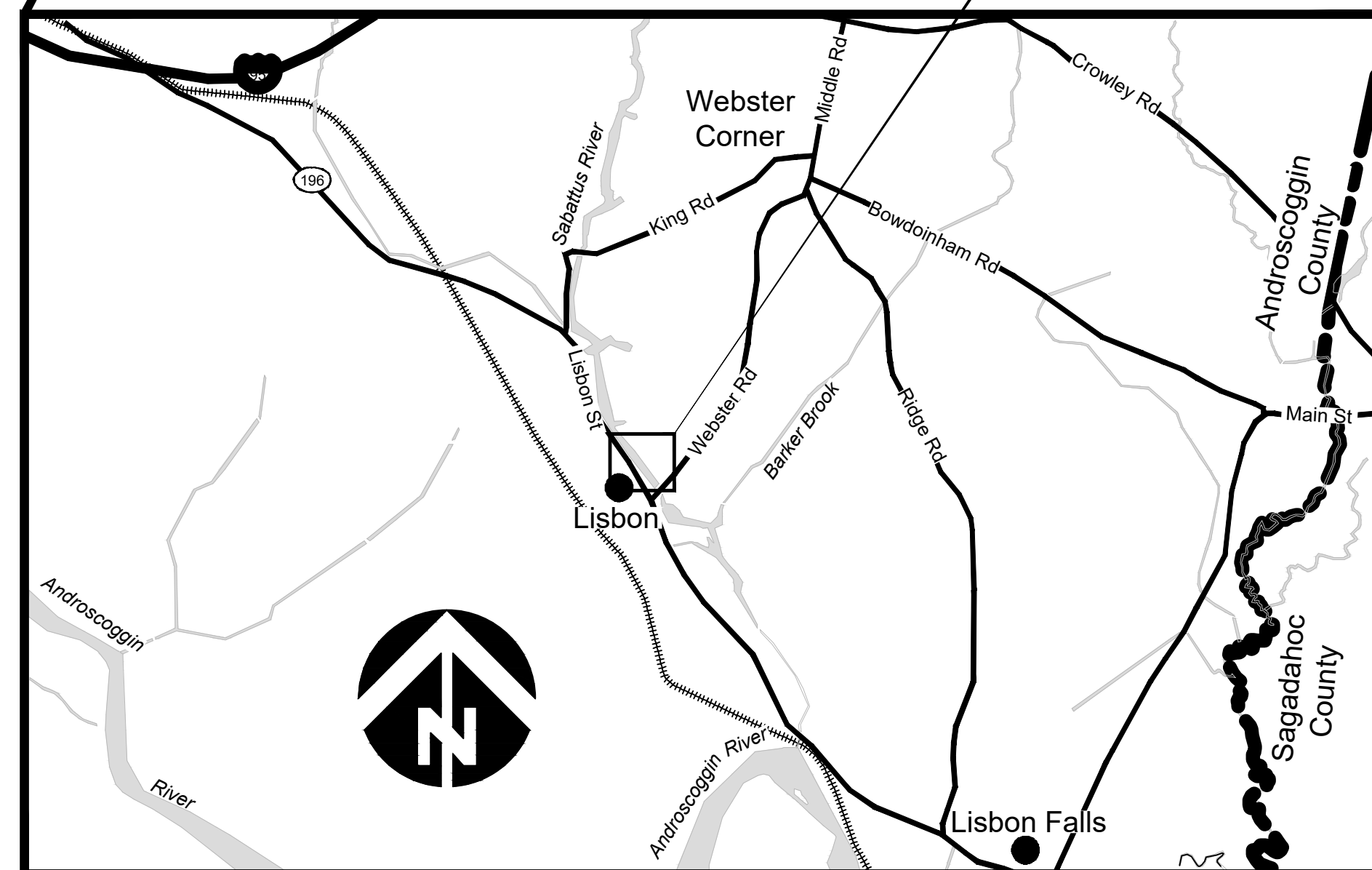
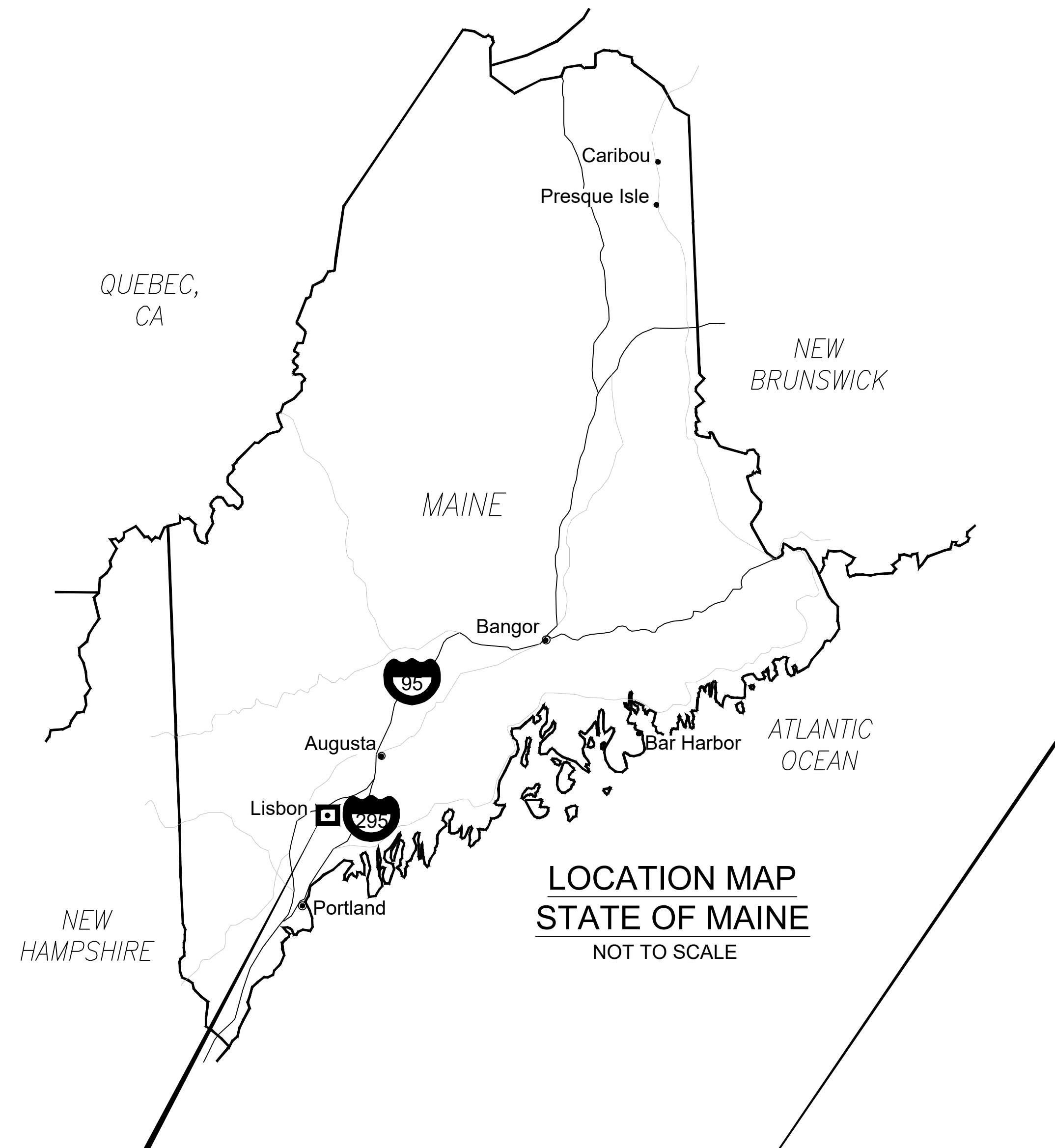


UPPER TOWN DAM REMOVAL - SABATTUS RIVER FINAL DESIGN

TOWN OF LISBON,
ANDROSCOGGIN COUNTY, MAINE

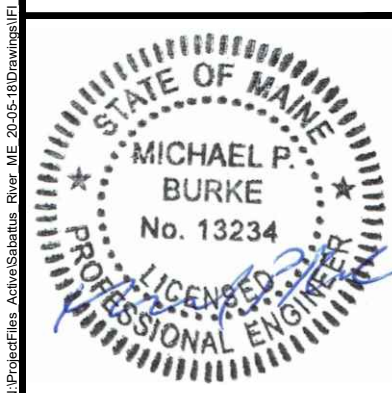
AUGUST 24, 2022



SITE MAP
ANSI D SCALE: 1" = 60'

SHEET LIST

- 1 TITLE SHEET
- 2 EXISTING CONDITIONS AND SURVEY CONTROL
- 3 ACCESS, STAGING, AND SEQUENCING
- 4 PROPOSED CONDITIONS PLAN AND PROFILE
- 5 CHANNEL SECTIONS AND PROFILES
- 6 TYPICAL SECTIONS AND DETAILS



NO.	BY	DATE	REVISION DESCRIPTION

SJ	MYS	MB
DRAWN	DESIGNED	CHECKED
MB	8/24/22	20-05-18
APPROVED	DATE	PROJECT

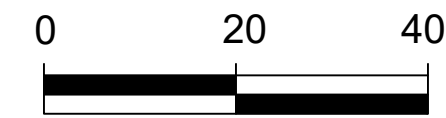
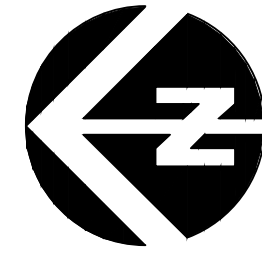
UPPER TOWN DAM REMOVAL
MAINE DEPT OF MARINE RESOURCES
LISBON ME



P.O. Box 236
Damariscotta, ME 04543
207.315.7014
www.interfluve.com

TITLE SHEET

SHEET
1 OF 6



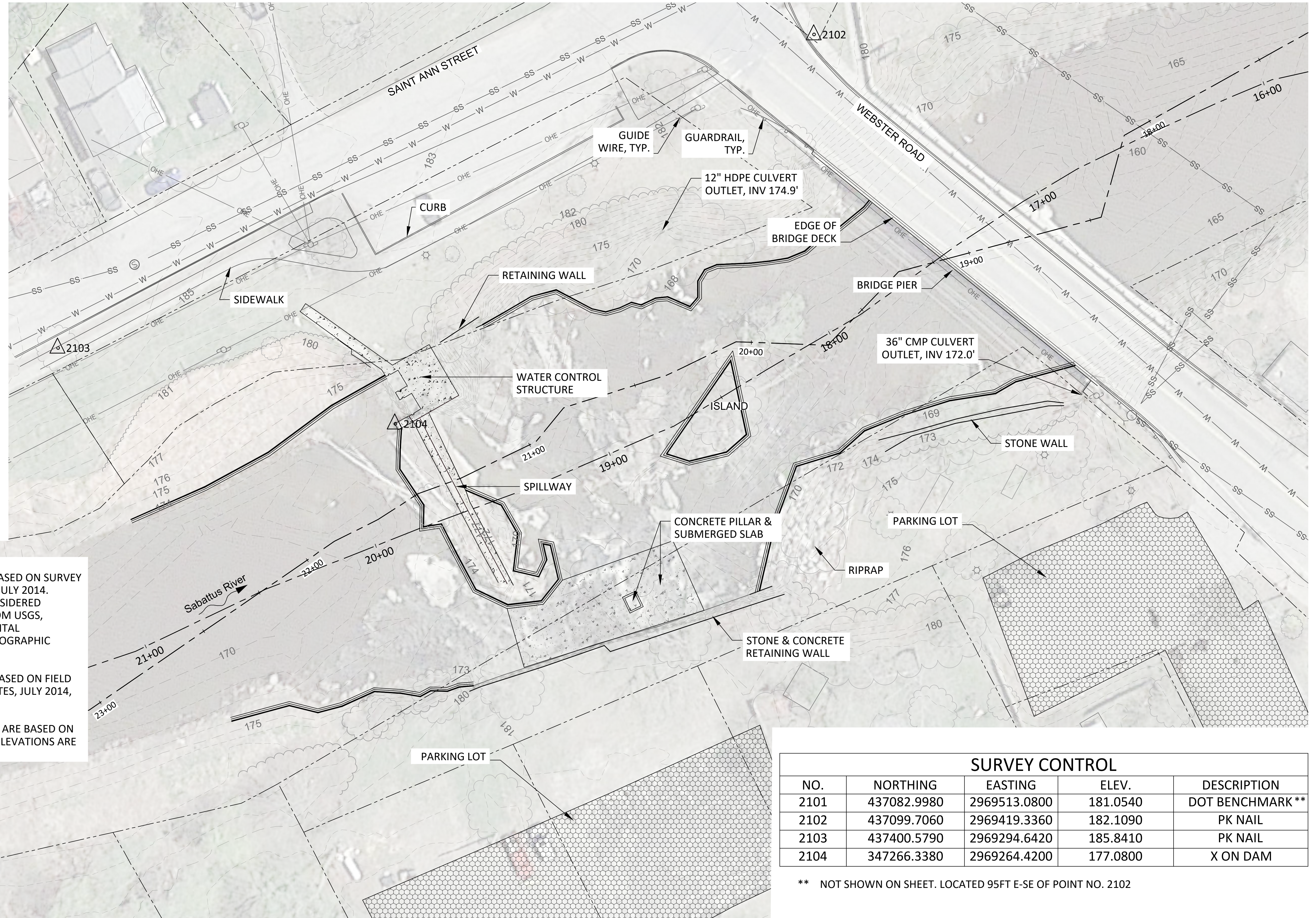
SCALE IN FEET
BAR LENGTHS MEASURE
1-INCH ON 22 IN. X 34IN.
PRINT

LEGEND

- 178 --- 1 FT EXISTING CONTOUR
- 175 --- 5 FT EXISTING CONTOUR
- --- PROPERTY LINE
- +--- EXISTING ALIGNMENT
- ==== ORDINARY HIGH WATER
- OHE --- OVERHEAD ELECTRIC
- W --- WATER LINE
- SS --- SANITARY SEWER LINE / MANHOLE
- ⊙ --- POWER POLE
- ⊙ --- LIGHT POLE
- ☁ --- TREES AND VEGETATION
- ▭ --- EXISTING BUILDING / STRUCTURE

NOTES

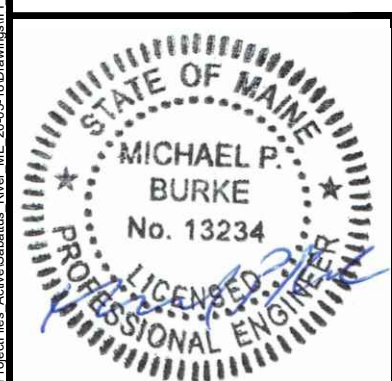
1. TOPOGRAPHIC AND BATHYMETRIC DATA BASED ON SURVEY COLLECTED BY TITCOMB AND ASSOCIATES JULY 2014. BATHYMETRIC CONTOURS SHOULD BE CONSIDERED APPROXIMATE. LIDAR DATA OBTAINED FROM USGS, COLLECTED IN 2009, PROVIDES SUPPLEMENTAL TOPOGRAPHY OUTSIDE THE LIMITS OF TOPOGRAPHIC SURVEY.
2. EXISTING ORDINARY HIGH WATER LINE IS BASED ON FIELD OBSERVATIONS BY TITCOMB AND ASSOCIATES, JULY 2014, AND INTER-FLUVE INC, MARCH 2021.
3. HORIZONTAL AND VERTICAL COORDINATES ARE BASED ON MAINE STATE PLANE NAD83, WEST ZONE. ELEVATIONS ARE BASED ON NAVD88.



SURVEY CONTROL

NO.	NORTHING	EASTING	ELEV.	DESCRIPTION
2101	437082.9980	2969513.0800	181.0540	DOT BENCHMARK **
2102	437099.7060	2969419.3360	182.1090	PK NAIL
2103	437400.5790	2969294.6420	185.8410	PK NAIL
2104	347266.3380	2969264.4200	177.0800	X ON DAM

** NOT SHOWN ON SHEET. LOCATED 95FT E-SE OF POINT NO. 2102



NO.	BY	DATE	REVISION DESCRIPTION

SJ	MYS	MB
DRAWN	DESIGNED	CHECKED
MB	8/24/22	20-05-18
APPROVED	DATE	PROJECT

UPPER TOWN DAM REMOVAL
MAINE DEPT OF MARINE RESOURCES
LIBSON ME



P.O. Box 236
Damariscotta, ME 04543
207.315.7014
www.interfluve.com

EXISTING CONDITIONS AND
SURVEY CONTROL

SUGGESTED CONSTRUCTION SEQUENCE

SITE PREPARATION:

1. ESTABLISH INGRESS/EGRESS AND STAGING AREA. STAGING AREA SHALL BE RESTORED TO PRE-MOBILIZATION CONDITIONS OR BETTER AT THE END OF THE PROJECT.
2. INSTALL LOCAL EROSION CONTROL BMPs IN COMPLIANCE WITH PERMITS AND PROJECT SPECIFICATIONS PRIOR TO SITE CLEARING AND GROUND DISTURBANCE.
3. PERFORM SITE CLEARING ALONG AND ESTABLISH CONSTRUCTION ACCESS ALIGNMENTS.
4. INSTALL CONSTRUCTION ACCESS. CONSTRUCTION ACCESS OVER THE RIVER SHALL BE A TEMPORARY BRIDGE OF WOODEN MATS OR APPROVED ALTERNATIVE.

PHASE 1:

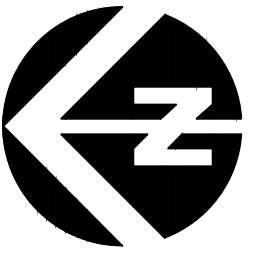
5. INSTALL CONTROL OF WATER PROVISIONS TO ROUTE RIVER FLOW TO RIVER RIGHT, IF NECESSARY.
6. ESTABLISH WORK AREA EXCLUSION FOR REMOVAL OF WATER WORKS STRUCTURE. PERFORM FISH RELOCATION FROM EXCLUSION ZONE.
7. AS NEEDED, LOCAL DEWATERING FROM ISOLATED WORK AREAS ARE TO BE DISCHARGED THROUGH FILTER BAG(S) AT A LOCATION TO BE FIELD VERIFIED WITH ASSISTANCE OF THE ENGINEER.
8. REMOVE WATER WORKS STRUCTURE AND EXCAVATE ACCUMULATED SEDIMENT TO CREATE A PILOT CHANNEL AS SHOWN ON PLANS.

PHASE 2:

9. RECONFIGURE CONTROL OF WATER PROVISIONS TO ROUTE RIVER FLOW TO RIVER LEFT THROUGH PILOT CHANNEL.
10. ESTABLISH WORK AREA EXCLUSION FOR RIGHT SIDE OF DAM SPILLWAY, PILLAR, AND SUBMERGED SLAB REMOVAL. PERFORM FISH RELOCATION FROM EXCLUSION ZONE.
11. REMOVE RIGHT SIDE OF DAM SPILLWAY, PILLAR, AND SUBMERGED SLAB.
12. REMOVE MASONRY AND CONCRETE RETAINING WALL ON RIVER RIGHT AND INSTALL SLOPE STABILIZATION AS SHOWN ON PLANS.

PHASE 3:

13. RECONFIGURE CONTROL OF WATER PROVISIONS TO ROUTE RIVER FLOW TO RIVER RIGHT.
14. ESTABLISH WORK AREA EXCLUSION FOR THE LEFT SIDE OF DAM SPILLWAY AND RETAINING WALL ON RIVER LEFT. PERFORM FISH RELOCATION FROM EXCLUSION ZONE.
15. REMOVE LEFT SIDE OF DAM SPILL WAY AND CONCRETE RETAINING WALL ON RIVER LEFT.
16. INSTALL SLOPE STABILIZATION ON RIVER LEFT AS SHOWN ON PLANS.
17. COMPLETE REMAINING SITE ENHANCEMENTS ON RIVER LEFT.
18. WHEN PERFORMING DEMOLITION OR EARTHWORK ADJACENT TO ACTIVE FLOWING RIVER OR SENSITIVE AREAS, UTILIZE BMPs TO PREVENT DISCHARGE OF SEDIMENT OR SEDIMENT LADEN WATER TO THE SABATTUS RIVER.



0 20 40

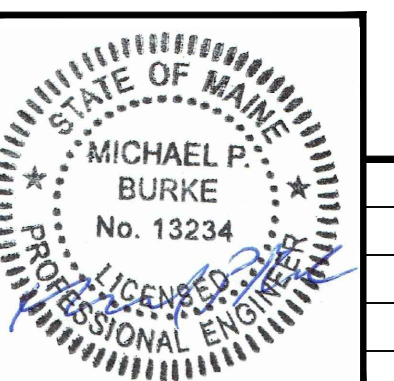
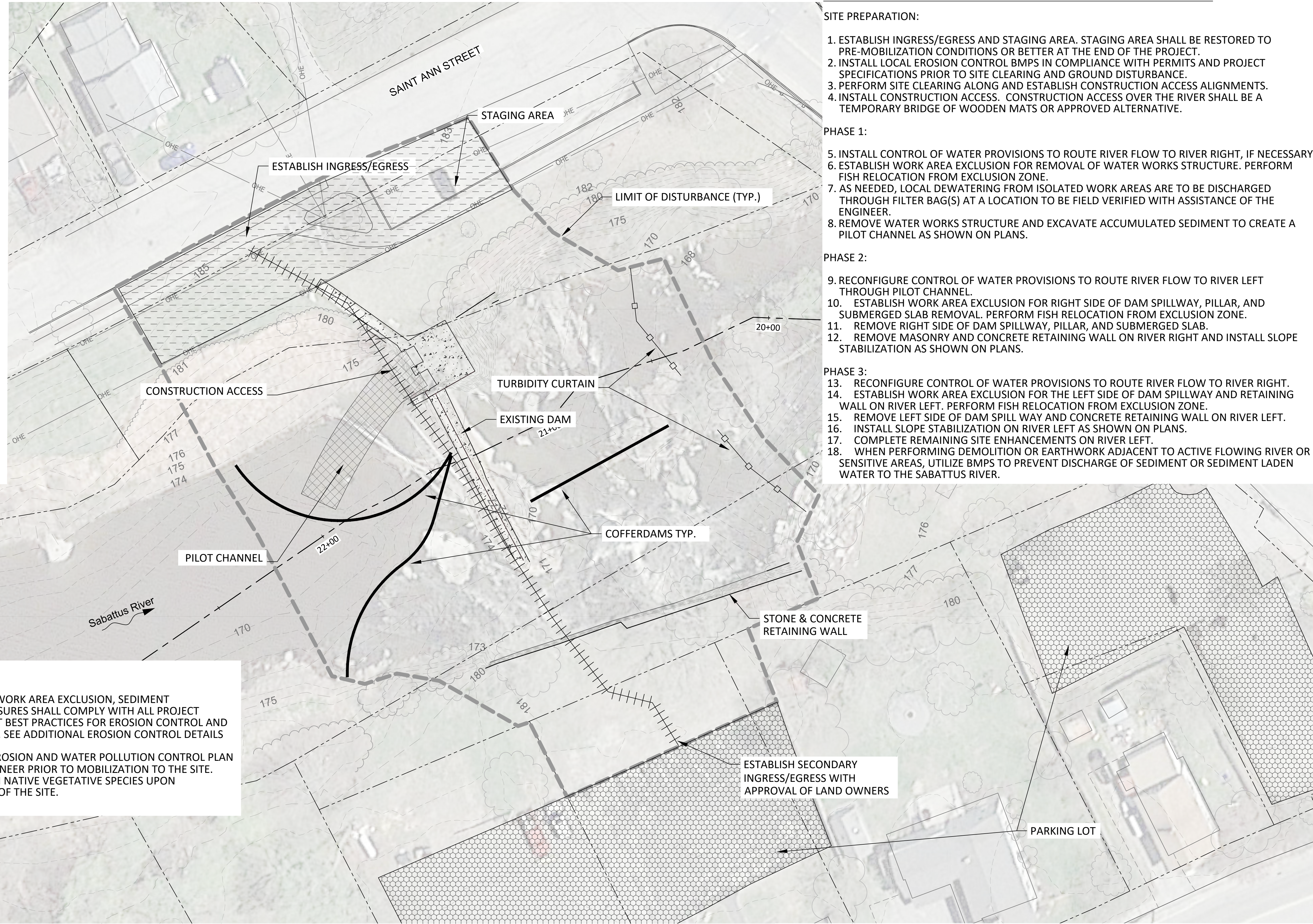
SCALE IN FEET
BAR LENGTHS MEASURE
1-INCH ON 22 IN. X 34IN.
PRINT

LEGEND

- 178 --- 1 FT EXISTING CONTOUR
- 175 --- 5 FT EXISTING CONTOUR
- --- PROPERTY LINE
- + --- EXISTING ALIGNMENT
- 22+00 --- OVERHEAD ELECTRIC
- SS --- SS --- SANITARY SEWER LINE / MANHOLE
- ⊙ --- POWER POLE
- ⊙ --- LIGHT POLE
- TREES AND VEGETATION
- --- EXISTING BUILDING / STRUCTURE

EROSION CONTROL NOTES

1. ALL SPECIFIC EROSION CONTROL BMPs INCLUDING WORK AREA EXCLUSION, SEDIMENT CONTAINMENT, AND POLLUTION PREVENTION MEASURES SHALL COMPLY WITH ALL PROJECT PERMITS AND SPECIFICATIONS, AND THE MAINE DOT BEST PRACTICES FOR EROSION CONTROL AND SEDIMENTATION CONTROL MANUAL (MEDOT 2008). SEE ADDITIONAL EROSION CONTROL DETAILS ON SHEET 6.
2. THE CONTRACTOR SHALL SUBMIT A SPECIFIC SOIL EROSION AND WATER POLLUTION CONTROL PLAN (SEWPCCP) FOR REVIEW AND APPROVAL BY THE ENGINEER PRIOR TO MOBILIZATION TO THE SITE.
3. ALL AREAS OF EXPOSED SOIL SHALL BE SEEDED WITH NATIVE VEGETATIVE SPECIES UPON COMPLETION OF FINISHED GRADING IN EACH AREA OF THE SITE.



NO.	BY	DATE	REVISION DESCRIPTION

SJ	MYS	MB
DRAWN	DESIGNED	CHECKED
MB	8/24/22	20-05-18
APPROVED	DATE	PROJECT

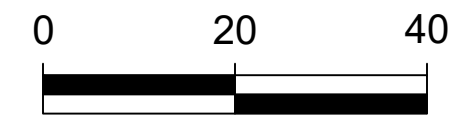
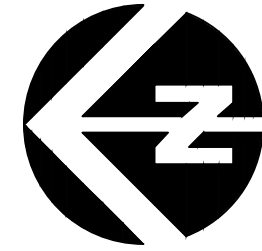
UPPER TOWN DAM REMOVAL
MAINE DEPT OF MARINE RESOURCES
LIBSON ME



P.O. Box 236
Damariscotta, ME 04543
207.315.7014
www.interfluve.com

ACCESS, STAGING, AND SEQUENCING

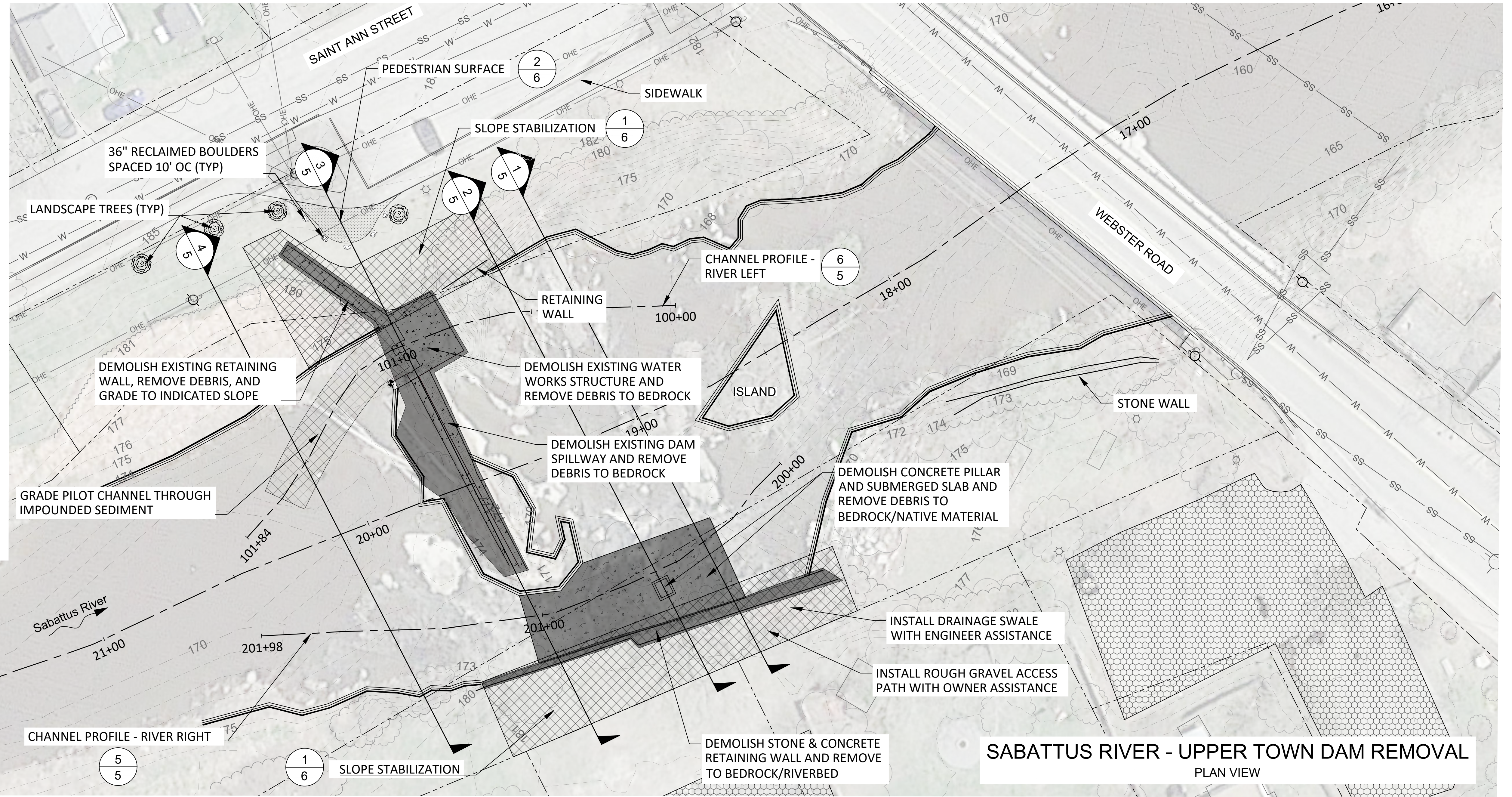
SHEET
3 OF 6



SCALE IN FEET
BAR LENGTHS MEASURE
1-INCH ON 22 IN. X 34IN.
PRINT

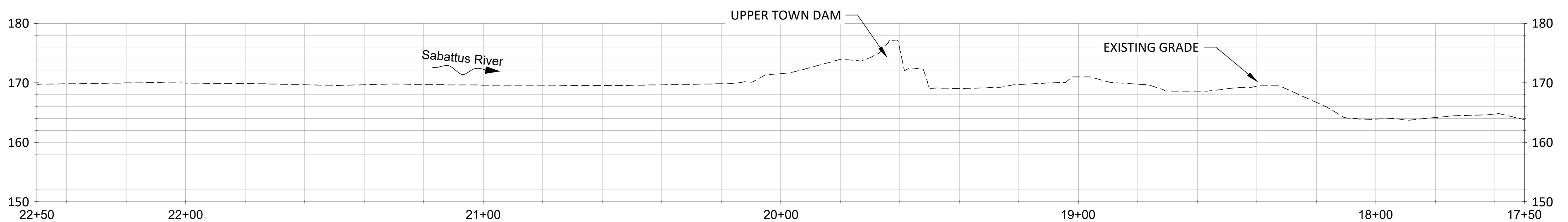
LEGEND

- 178 --- 1 FT EXISTING CONTOUR
- 175 --- 5 FT EXISTING CONTOUR
- --- PROPERTY LINE
- +--- 22+00 --- EXISTING ALIGNMENT
- --- ORDINARY HIGH WATER
- OHE --- OVERHEAD ELECTRIC
- W --- W --- WATER LINE
- SS --- SS --- SANITARY SEWER LINE / MANHOLE
- --- POWER POLE
- --- LIGHT POLE
- --- TREES AND VEGETATION
- --- EXISTING BUILDING / STRUCTURE

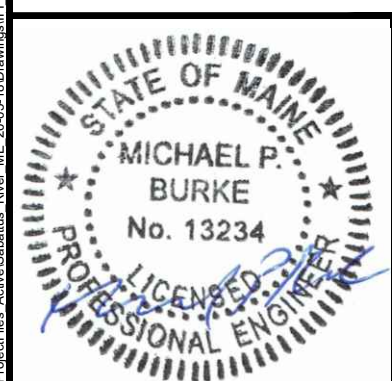


SABATTUS RIVER - UPPER TOWN DAM REMOVAL
PLAN VIEW

2x VERTICAL
EXAGGERATION
10 FT
20 FT
HORIZONTAL AND
VERTICAL SCALE
LENGTHS MEASURE
1-INCH ON ORIGINAL
ANSI D DRAWING



SABATTUS RIVER - UPPER TOWN DAM REMOVAL
PROFILE VIEW



NO.	BY	DATE	REVISION DESCRIPTION

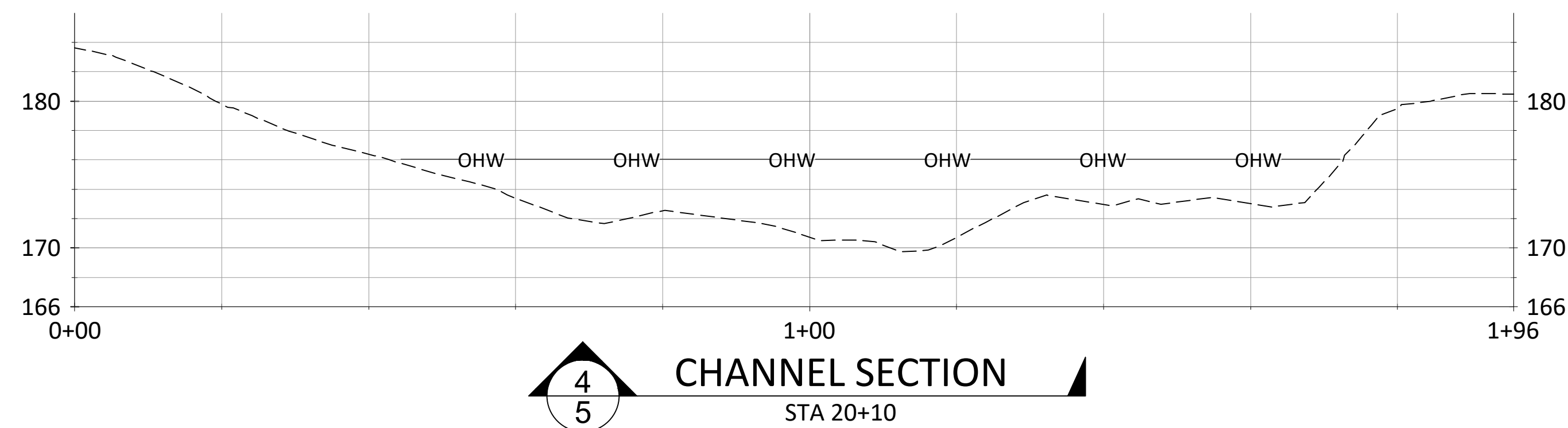
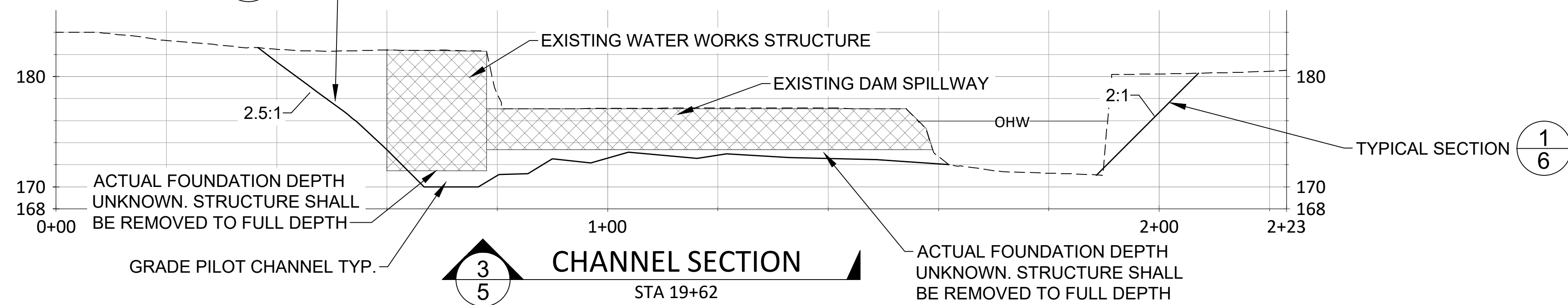
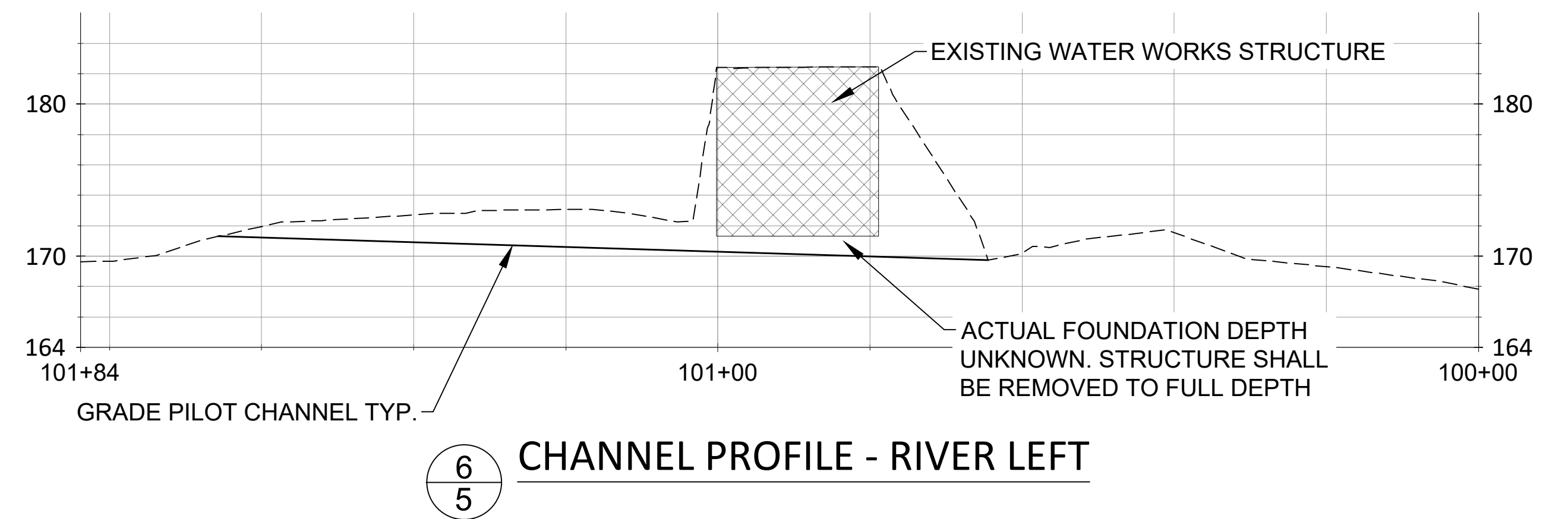
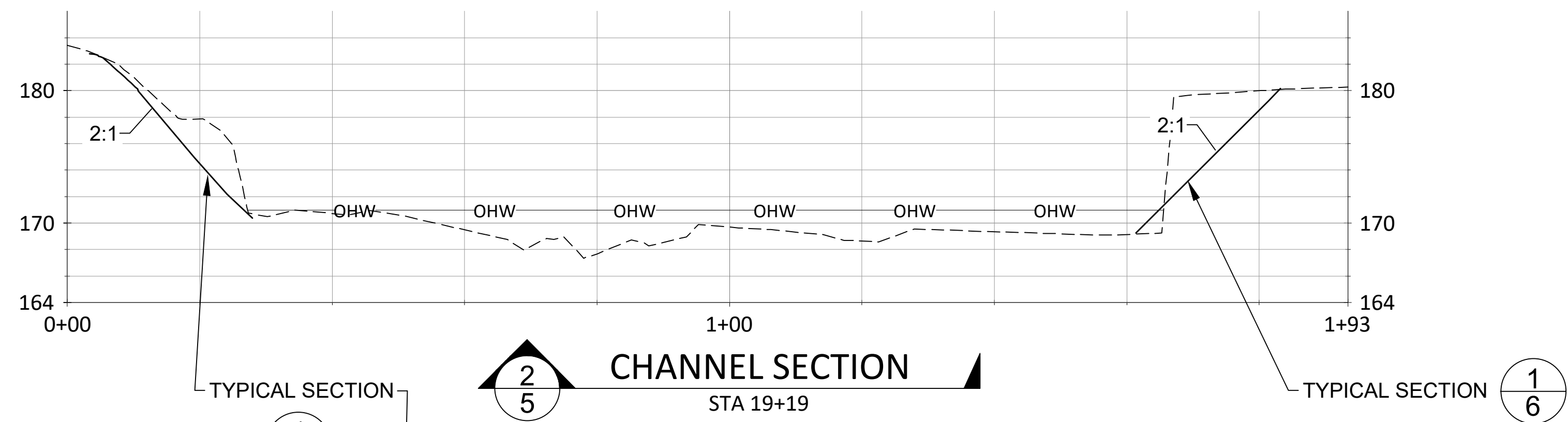
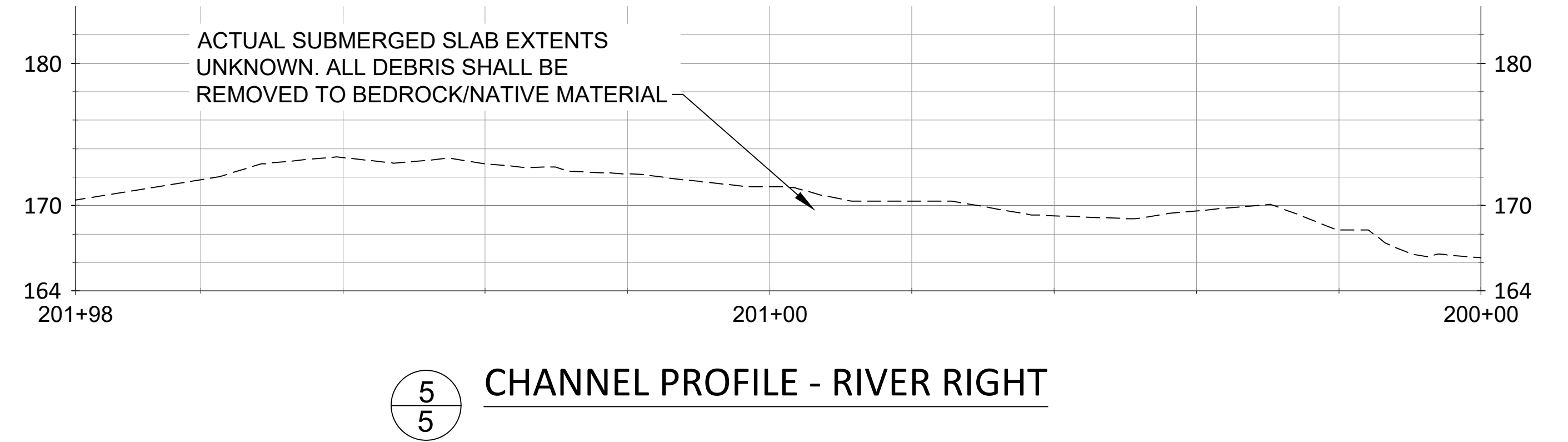
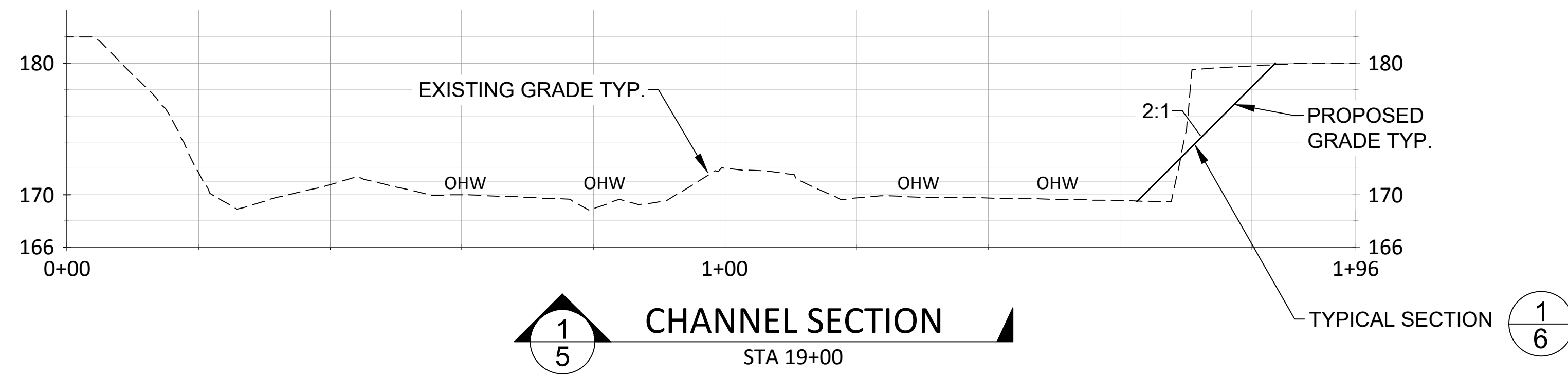
SJ	MYS	MB
DRAWN	DESIGNED	CHECKED
MB	8/24/22	20-05-18
APPROVED	DATE	PROJECT

UPPER TOWN DAM REMOVAL
MAINE DEPT OF MARINE RESOURCES
LISBON ME

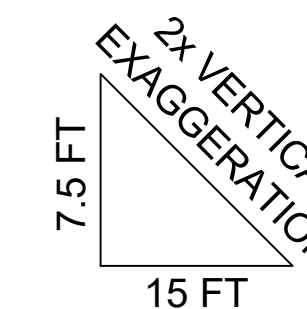


P.O. Box 236
Damariscotta, ME 04543
207.315.7014
www.interfluve.com

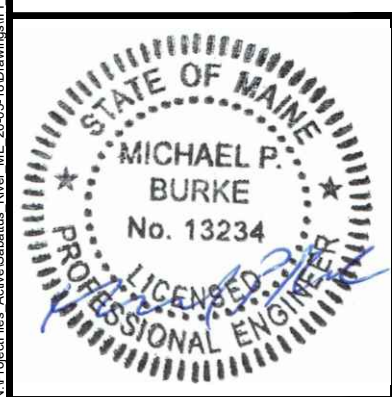
PROPOSED CONDITIONS
PLAN AND PROFILE



HORIZONTAL AND VERTICAL SCALE LENGTHS MEASURE 1-INCH ON ORIGINAL ANSI D DRAWING



NOTE: SECTION ORIENTATION FACES DOWNSTREAM LEFT TO RIGHT.



NO.	BY	DATE	REVISION DESCRIPTION

SJ	MYS	MB
DRAWN	DESIGNED	CHECKED
MB	8/24/22	20-05-18
APPROVED	DATE	PROJECT

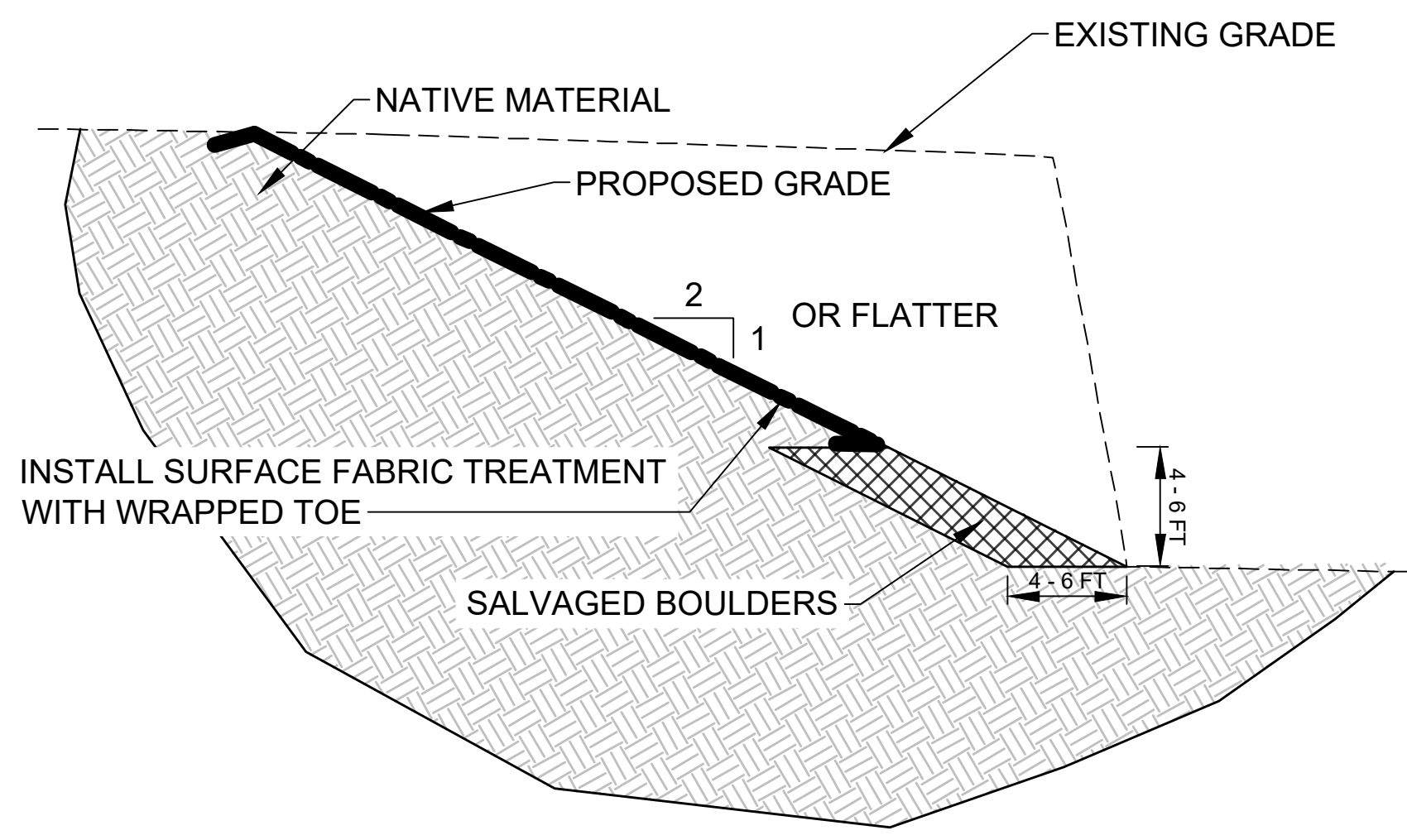
UPPER TOWN DAM REMOVAL
MAINE DEPT OF MARINE RESOURCES
LIBSON ME



P.O. Box 236
Damariscotta, ME 04543
207.315.7014
www.interfluve.com

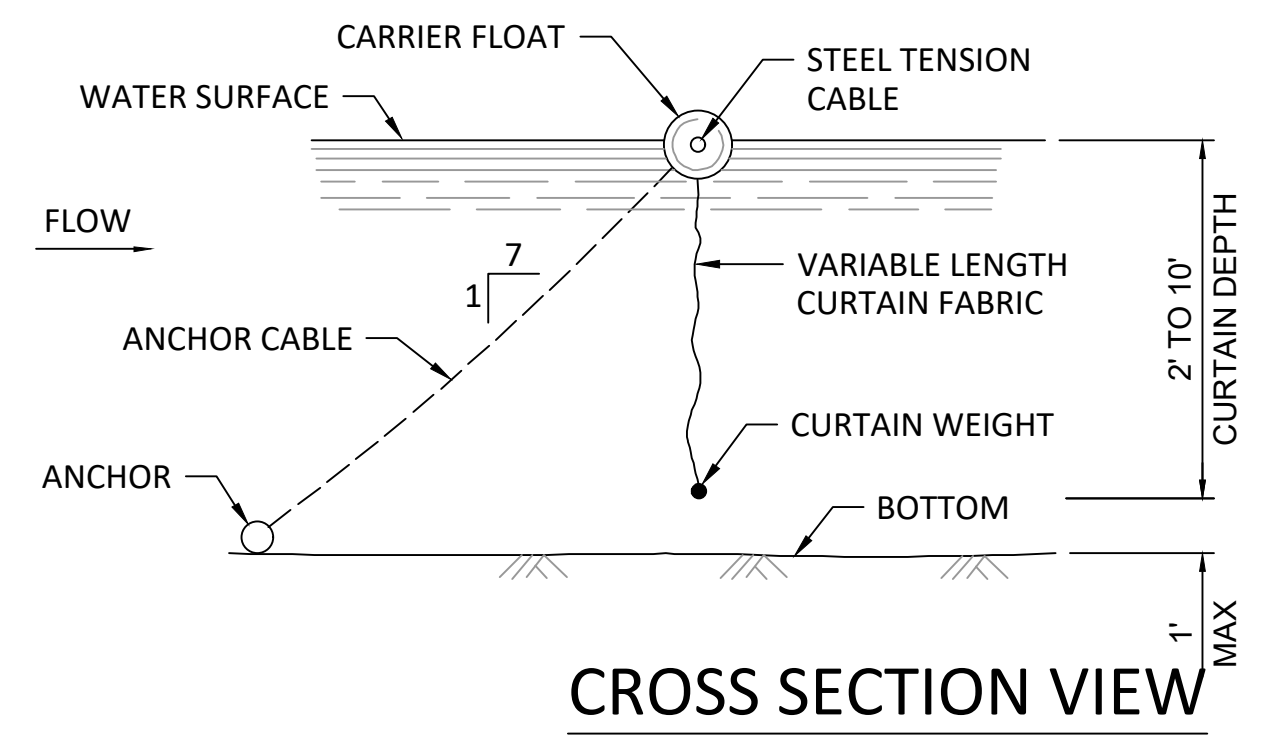
CHANNEL SECTIONS AND PROFILES

SHEET
5 OF 6

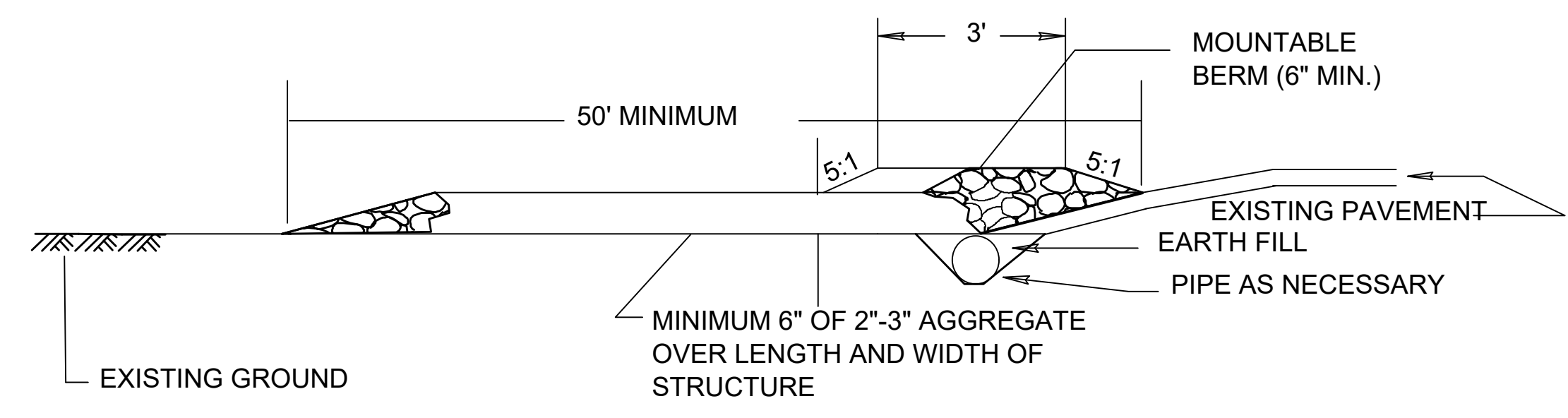
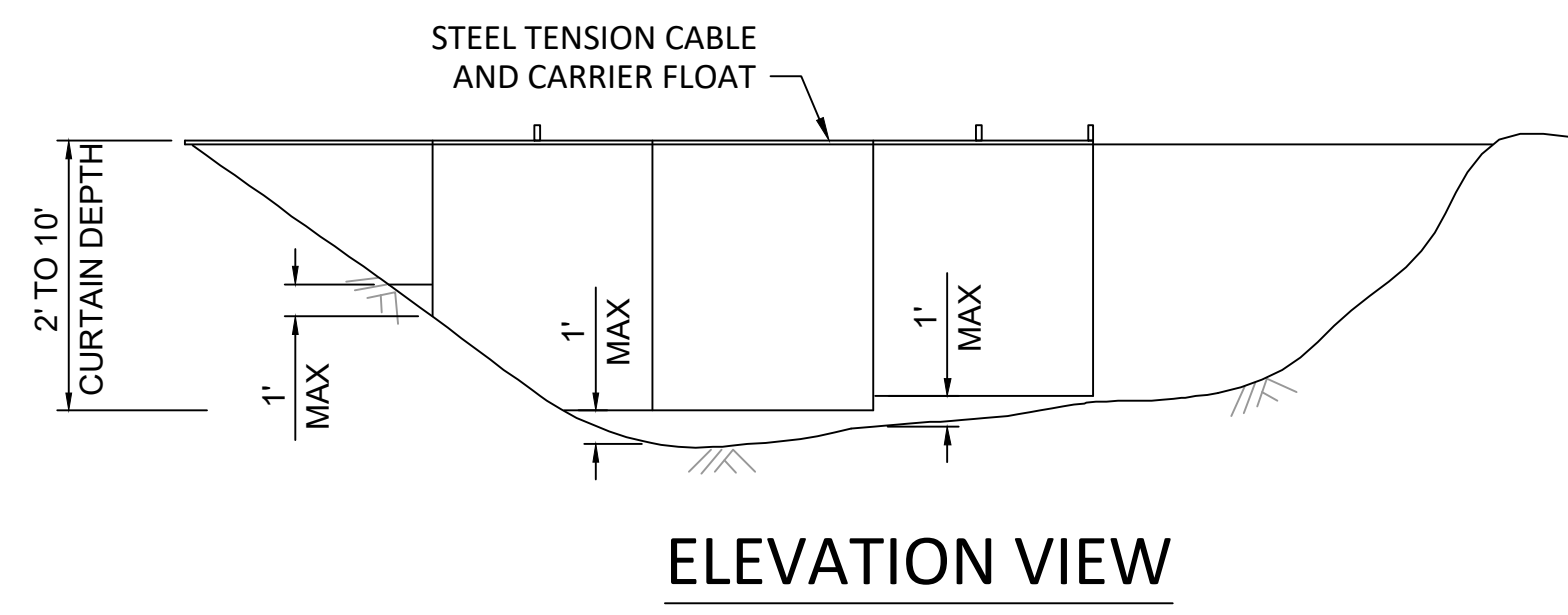


1
6 **TYPICAL SECTION - SLOPE STABILIZATION**
NOT TO SCALE

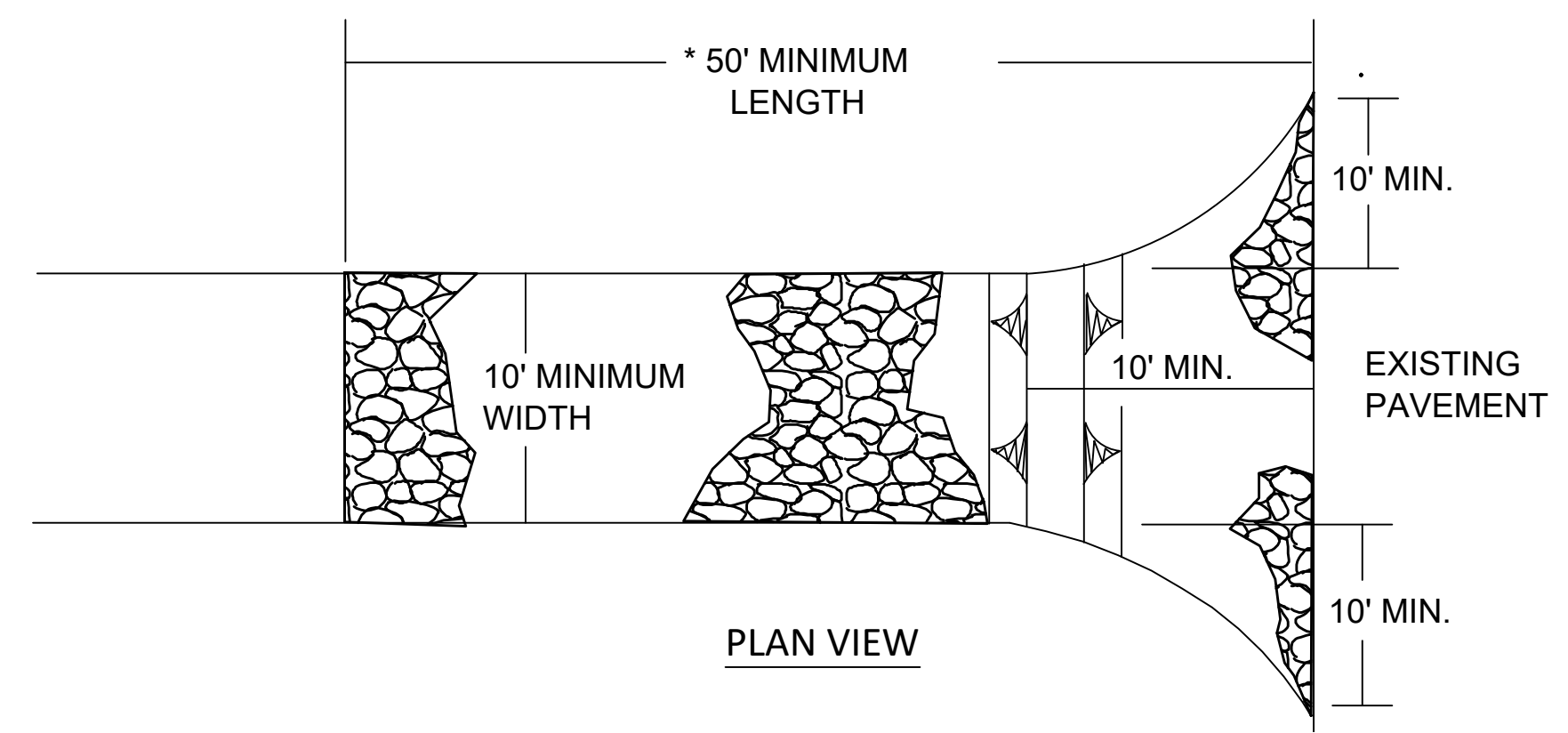
- NOTES
- FABRIC SHALL BE OVERLAPPED AT A MINIMUM OF 18IN AND SHALL BE KEYED INTO THE GROUND WITH A MINIMUM LENGTH OF 1FT.
 - DISTURBED NATIVE MATERIAL SHALL BE SEEDED
 - RIPARIAN SHRUBS AND TREES SHALL BE PLANTED THROUGHOUT THE SLOPE STABILIZATION AREA AT A SPACING OF 10FT OC AND 20FT OC RESPECTIVELY.



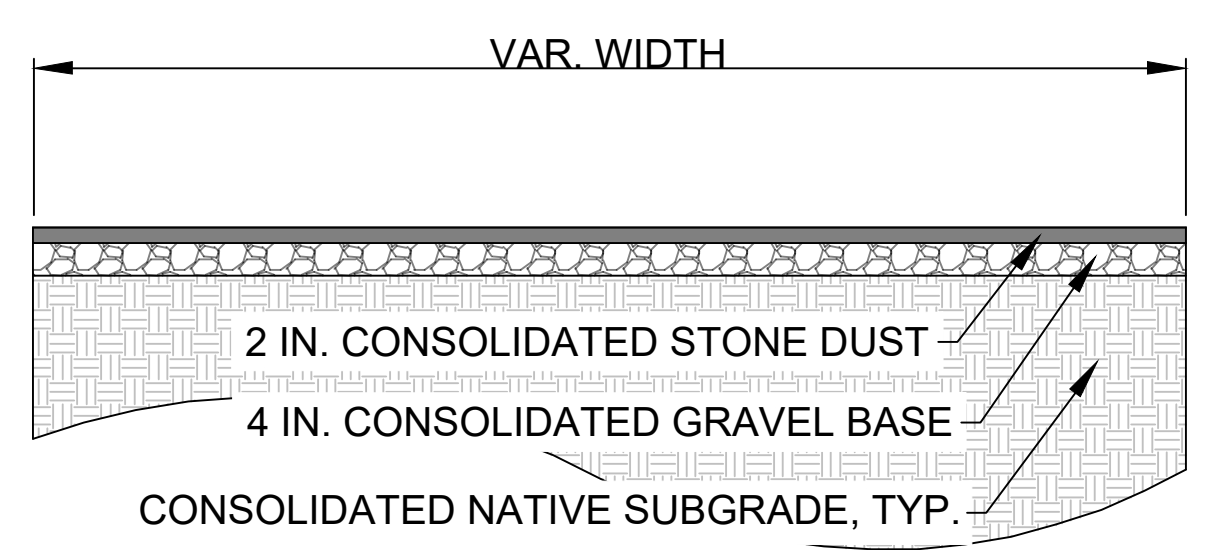
4
6 **DETAIL - TURBIDITY CURTAIN**
NOT TO SCALE



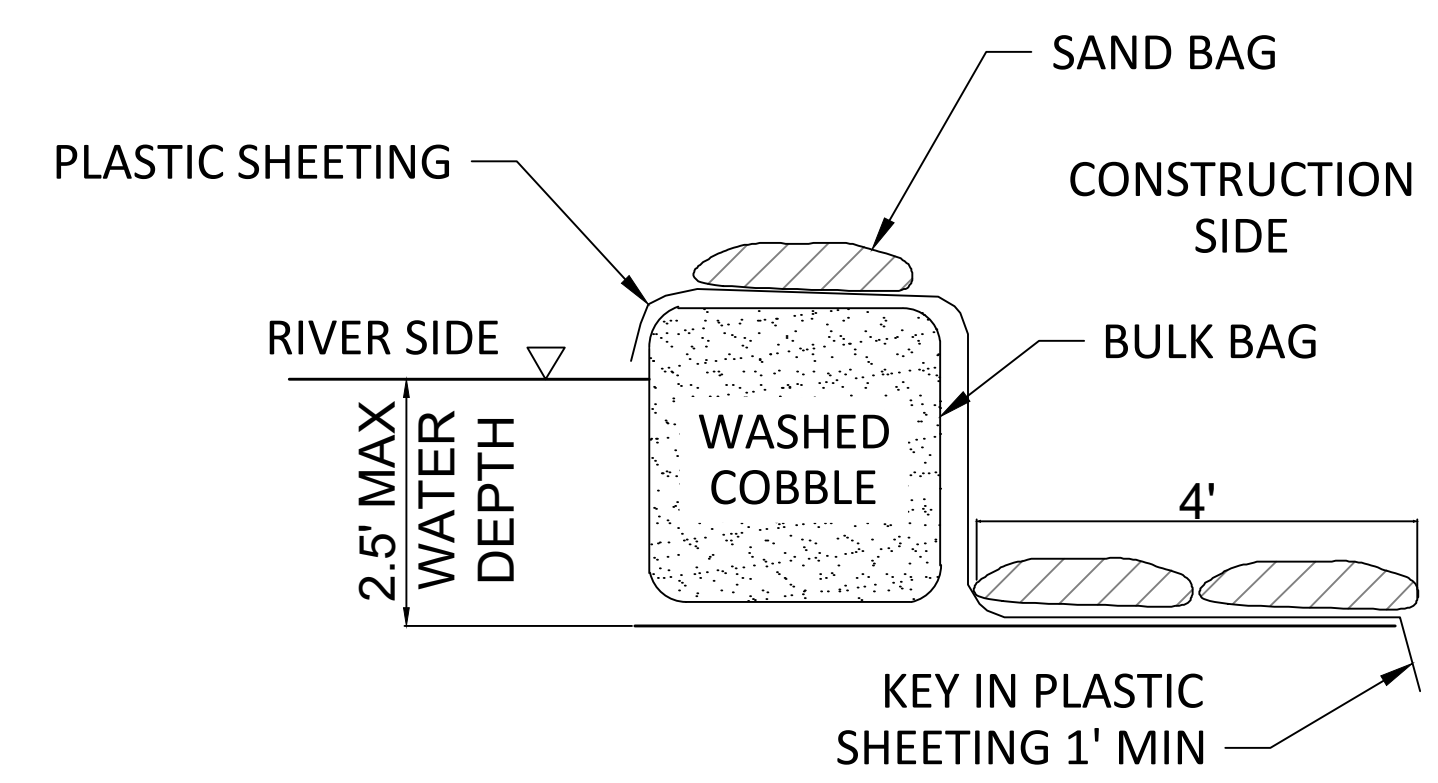
PROFILE



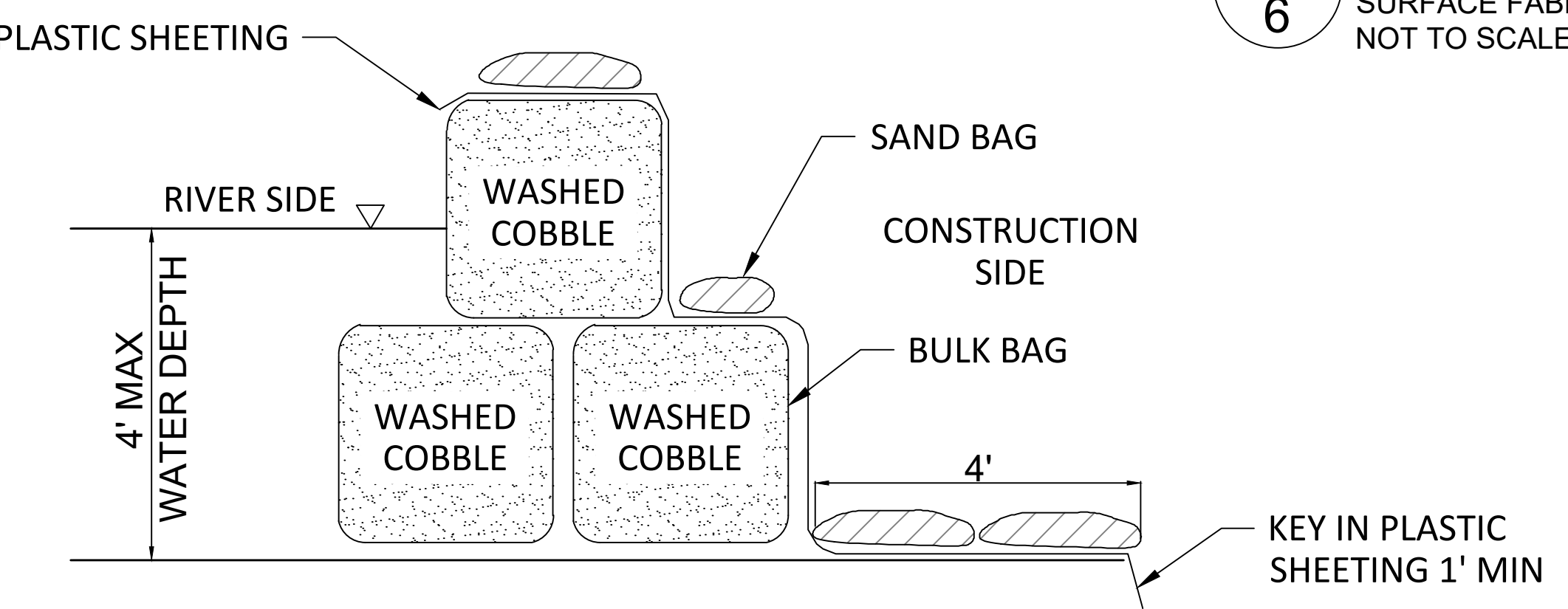
PLAN VIEW



2
6 **TYPICAL SECTION - PEDESTRIAN SURFACE**
SCALE: 1" = 2'

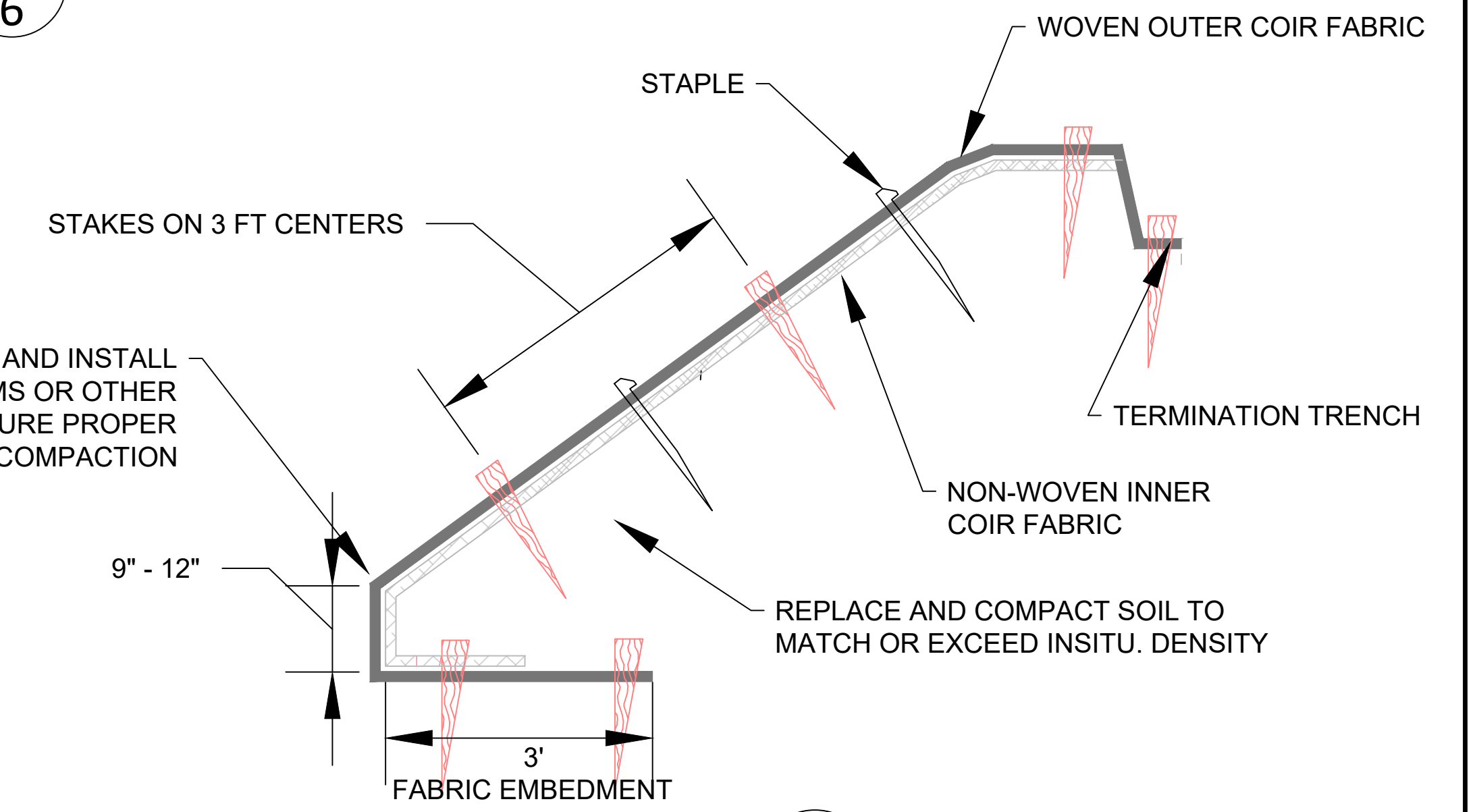


5
6 **DETAIL - TEMPORARY COFFER DAM**
NOT TO SCALE

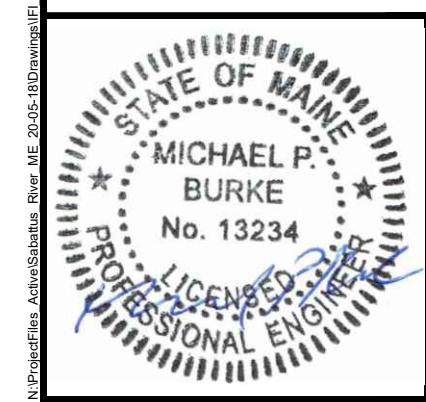


- LENGTH - MINIMUM OF 30'.
- WIDTH - 10' MINIMUM, SHOULD BE FLARED AT THE EXISTING ROAD TO PROVIDE A TURNING RADIUS.
- GEOTEXTILE FABRIC (FILTER CLOTH) SHALL BE PLACED OVER THE EXISTING GROUND PRIOR TO PLACING STONE.
- STONE - CRUSHED AGGREGATE (2" TO 3") OR RECLAIMED OR RECYCLED CONCRETE EQUIVALENT SHALL BE PLACED AT LEAST 6" DEEP OVER THE LENGTH AND WIDTH OF THE ENTRANCE.
- SURFACE WATER - ALL SURFACE WATER FLOWING TO OR DIVERTED TOWARD CONSTRUCTION ENTRANCES SHALL BE PIPED THROUGH THE ENTRANCE, MAINTAINING POSITIVE DRAINAGE. PIPE INSTALLED THROUGH THE STABILIZED CONSTRUCTION ENTRANCE SHALL BE PROTECTED WITH A MOUNTABLE BERM WITH 5:1 SLOPES AND A MINIMUM OF 6" OF STONE OVER THE PIPE. PIPE HAS TO BE SIZED ACCORDING TO THE DRAINAGE. WHEN THE SCE IS LOCATED AT A HIGH SPOT AND HAS NO DRAINAGE TO CONVEY A PIPE WILL NOT BE NECESSARY. PIPE SHOULD BE SIZED ACCORDING TO THE AMOUNT OF RUNOFF TO BE CONVEYED. A 6" MINIMUM WILL BE REQUIRED.
- LOCATION - A STABILIZED CONSTRUCTION ENTRANCE SHALL BE LOCATED SO THAT VEHICLES LEAVING THE SITE MUST TRAVEL OVER THE ENTIRE LENGTH OF THE STABILIZED CONSTRUCTION ENTRANCE.
- CLEANUP- REMOVE ENTRANCE COMPLETELY UPON PROJECT COMPLETION, AND RESTORE AREA TO PRE-PROJECT CONDITION.

3
6 **DETAIL - CONSTRUCTION ENTRANCE**



6
6 **WRAPPED TOE DETAIL**
SURFACE FABRIC TREATMENT
NOT TO SCALE



NO.	BY	DATE	REVISION DESCRIPTION

SJ	MYS	MB
DRAWN	DESIGNED	CHECKED
MB	8/24/22	20-05-18
APPROVED	DATE	PROJECT

UPPER TOWN DAM REMOVAL
MAINE DEPT OF MARINE RESOURCES
LISBON ME



P.O. Box 236
Damariscotta, ME 04543
207.315.7014
www.interfluve.com

TYPICAL SECTIONS AND DETAILS